

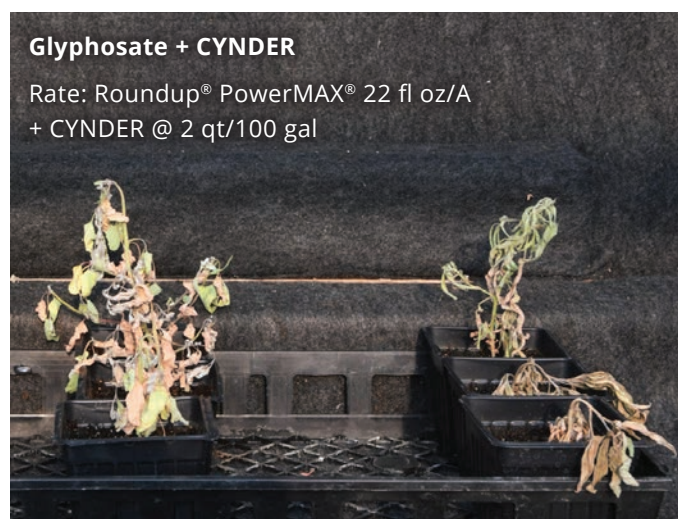
# Bring the Heat



CYNDER® enhances herbicide effectiveness with a unique blend of tallow-amine surfactants and water conditioners. It accelerates weed burndown when used with glyphosate, paraquat, dicamba, and 2,4-D, recommended at 1-4 qt/100 depending on water hardness. With the combination of tallow-amine surfactants and a citric acid water conditioning system, CYNDER works on hard to control weeds with this proven technology.

## 12 DAYS AFTER TREATMENT

Common Lambsquarters (left) and Kochia (right)



## CYNDER BENEFITS



Tallow-Amine Surfactants



Heats Up Herbicide Activity



Overcomes Hard Water Antagonism



Excellent Crop Safety



Improves Herbicide Translocation

SCAN THE CODE FOR MORE INFORMATION ON CYNDER



ALL INFORMATION CONTAINED HEREIN IS PROVIDED "AS-IS", AND WILBUR-ELLIS COMPANY LLC ("WILBUR-ELLIS") HEREBY EXPRESSLY DISCLAIMS ANY AND ALL REPRESENTATIONS AND WARRANTIES WITH RESPECT TO THE INFORMATION CONTAINED HEREIN, WHETHER EXPRESS OR IMPLIED BY LAW OR OTHERWISE, INCLUDING, WITHOUT LIMITATION ANY WARRANTY OF COMPLETENESS OR ACCURACY AND ANY WARRANTY OF FITNESS FOR A PARTICULAR USE OR WARRANTY OF MERCHANTABILITY. WILBUR-ELLIS SHALL NOT BE LIABLE FOR ANY DIRECT, INDIRECT, CONSEQUENTIAL, SPECIAL, OR INCIDENTAL DAMAGES ARISING OUT OF USE OF THE INFORMATION CONTAINED HEREIN OR ANY SERVICES PROVIDED BY WILBUR-ELLIS RELATED THERETO. © 2025 Wilbur-Ellis Company LLC. This document is for information only and is not an offer to sell or buy any products or services. Prior to use, always read applicable labels, terms and conditions, and related documents for complete instructions, proper usage, and limitations. WILBUR-ELLIS logo, The Power of We, CYNDER, and Water Quality logo are registered trademarks of Wilbur-Ellis Company LLC. Roundup and PowerMAX are registered trademarks of Bayer Group. K-487362

PDF185019CO05